

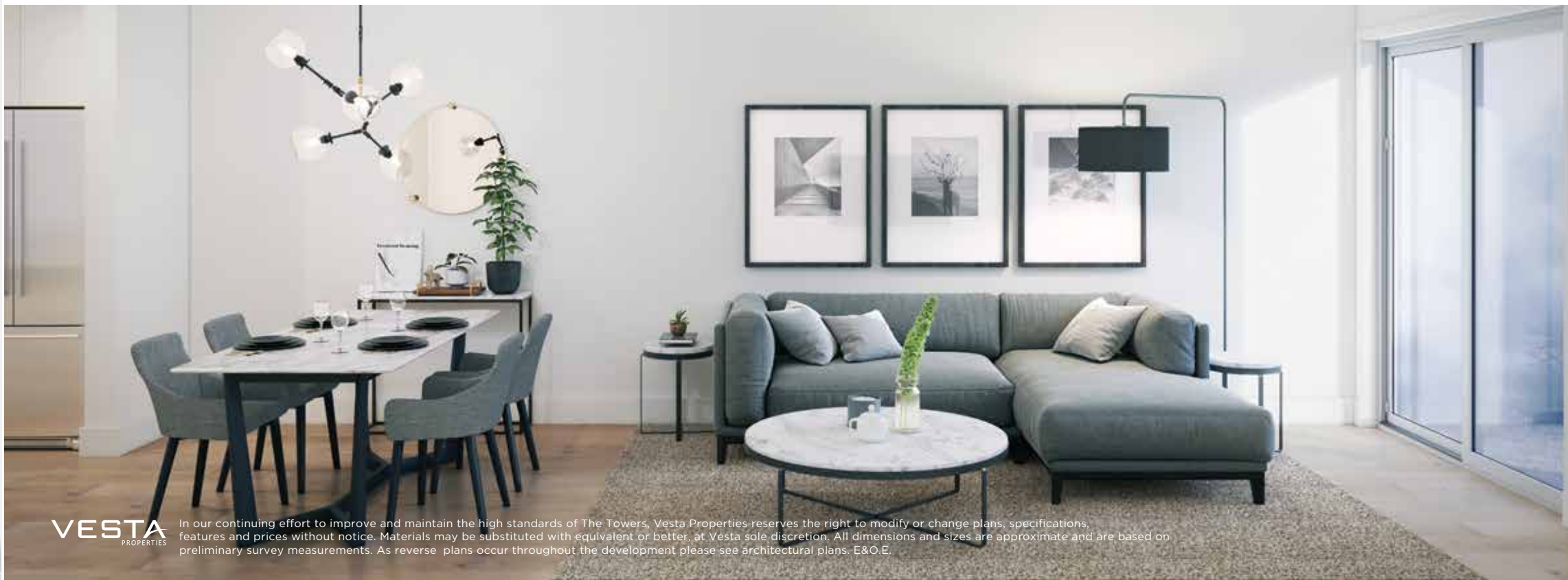
CITY TOWNHOMES

604.371.1669
THETOWERS.CA

VESTA
PROPERTIES

In our continuing effort to improve and maintain the high standards of The Towers, Vesta Properties reserves the right to modify or change plans, specifications, features and prices without notice. Materials may be substituted with equivalent or better, at Vesta sole discretion. All dimensions and sizes are approximate and are based on preliminary survey measurements. As reverse plans occur throughout the development please see architectural plans. E&O.E.





VESTA
PROPERTIES

In our continuing effort to improve and maintain the high standards of The Towers, Vesta Properties reserves the right to modify or change plans, specifications, features and prices without notice. Materials may be substituted with equivalent or better, at Vesta sole discretion. All dimensions and sizes are approximate and are based on preliminary survey measurements. As reverse plans occur throughout the development please see architectural plans. E&O.E.

FEATURES

A WELCOMING NEIGHBOURHOOD

- Located in Latimer Heights, a 74-acre transit-oriented master-planned community offering every comfort and convenience right outside your door
- Steps from Latimer Village, a walkable neighbourhood with a business hub, boutique-style shops, trendy restaurants, cozy cafes and other services
- Surrounded by 17 acres of green space, including greenways, park space and a central pond for a lush natural setting amid the city
- Manicured pathways connect to the Carvolth and Yorkson neighbourhoods via the city-wide trail system
- Just a short stroll from Carvolth Exchange, where the 555 Port Mann Express Bus connects to Lougheed Station for a stress-free SkyTrain ride to Downtown Vancouver
- Minutes from Highway 1, making trips across the Lower Mainland a breeze
- Conveniently located close to Langley Event Centre, Walnut Grove Community Centre and Willoughby Town Centre

EXCLUSIVE TOWER AMENITIES

- Over 75,000 sq. ft. of tower amenities exclusively for residents
- 50,000 sq. ft. of outdoor amenities include a putting green, sport court, outdoor adult fitness area, lounge with fireplace, barbecue area, kids' playground, dog park and community garden
- 25,000 sq. ft. of indoor amenities include a yoga room and fitness facilities in each tower, with cardio and strength-training equipment
- Flexible and spacious multipurpose room features a fully equipped kitchen, dining room and lounge

CONTEMPORARY HOMES WITH INSPIRED INTERIORS

- Thoughtfully laid out 3-Bedroom floorplans in both 2- and 4-Storey City Townhomes
- Intelligently designed open floor plans with expansive full-height windows offer spectacular natural light and generous sense of space
- Large private balcony expands living space into the outdoors
- Two designer-selected colour schemes to choose from: Grey and White
- Premium wood-look laminate flooring pairs a natural tone with easy maintenance
- Convenient USB charging station and vibrant LED lighting
- Energy-efficient front-loading LG washer and dryer

CHEF-READY KITCHENS

- Premium quartz countertop for a refined feel
- Large centralized include a kitchen island for extra counter space and bonus storage
- Contemporary cabinetry with soft-close doors and drawers
- Convenient under-cabinet LED lighting brightens the environment
- Sleek Moen faucet with pullout spray makes washing up easy
- Under-mount double-bowl stainless steel sink (depending on plan)
- Panasonic microwave with trim for seamless fit with cabinetry
- Stainless steel appliance package by Milano Fulgor (depending on plan)
 - French door refrigerator
 - 5-burner gas cooktop
 - Slide-out range hood
 - Built-in oven
 - Paneled-dishwasher

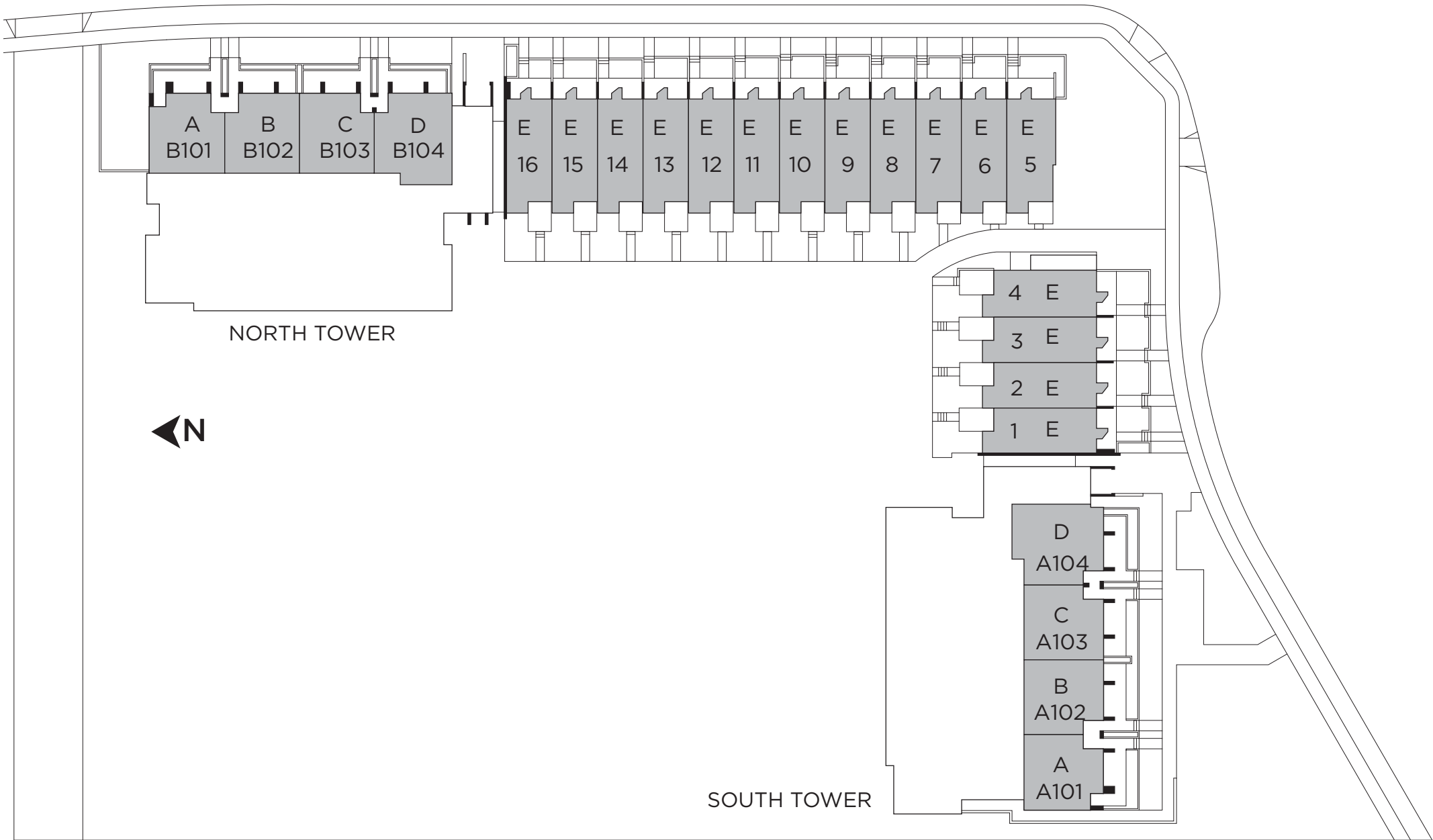
SOOTHING BATHROOMS

- Premium quartz countertop and backsplash with under-mount basin
- Contemporary vanity and cabinetry with soft-close doors and drawers
- Ensuite/main bath features spa-like floor-to-ceiling wall tiles
- Large-format floor tile adds to the elegant aesthetic
- Deep soaker tub offers total relaxation
- Deluxe fixtures accompanied by matching hardware add to the elevated ambiance

PEACE OF MIND

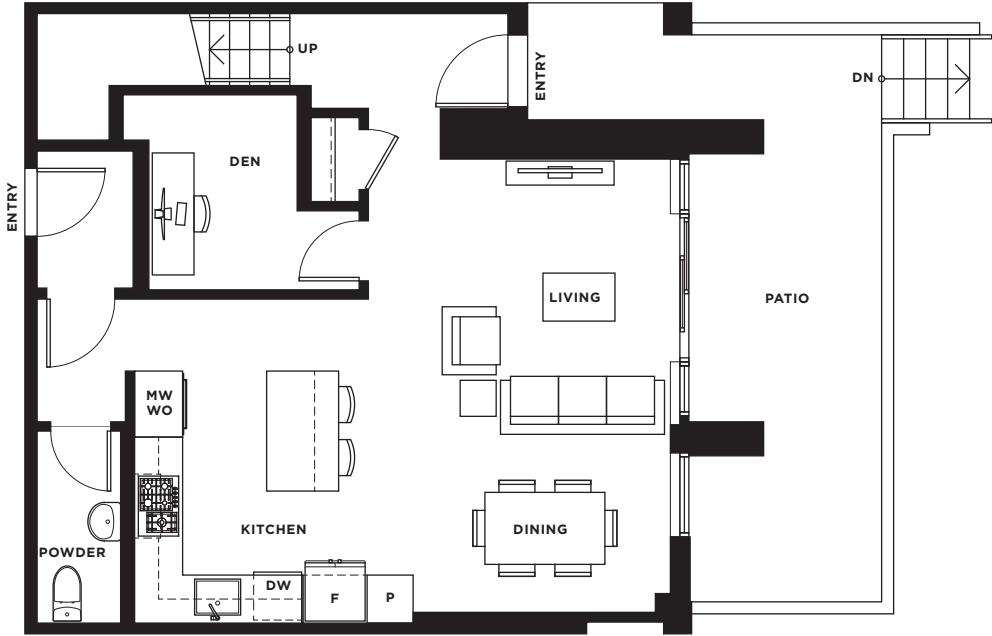
- Secure underground parkade with EV charging stalls
- Dog wash and car wash bay's underground parkade
- Private storage locker for every unit

KEY PLAN



City Home B

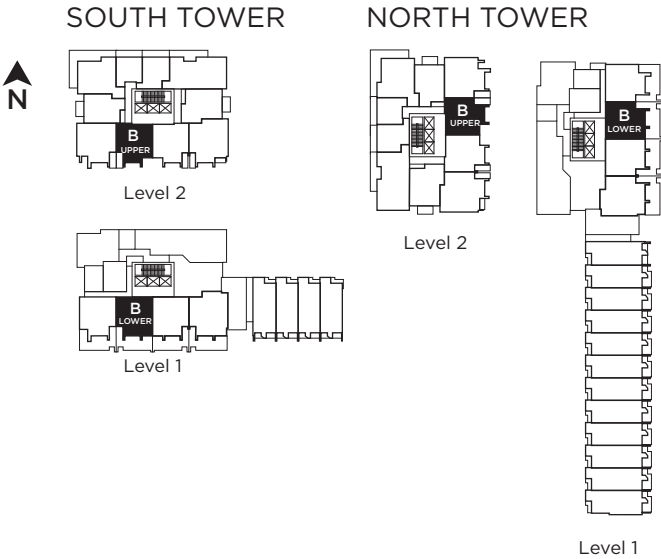
3 BEDROOM + DEN
2.5 BATH
1,343 SQ.FT.



Main Level



Upper Level

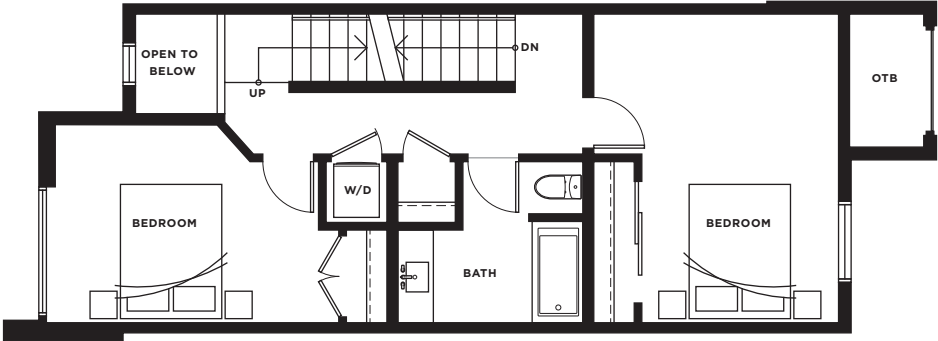


City Home E

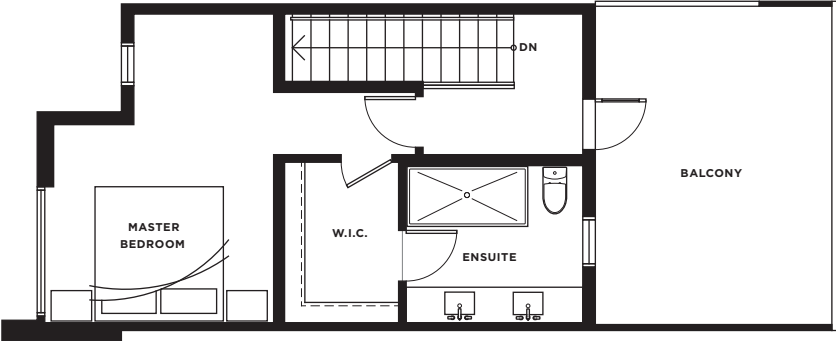
3 BEDROOM

2.5 BATH

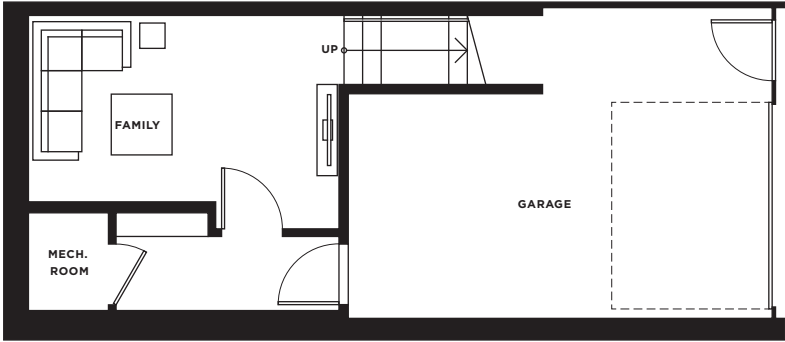
1,941 - 2,076 SQ.FT.



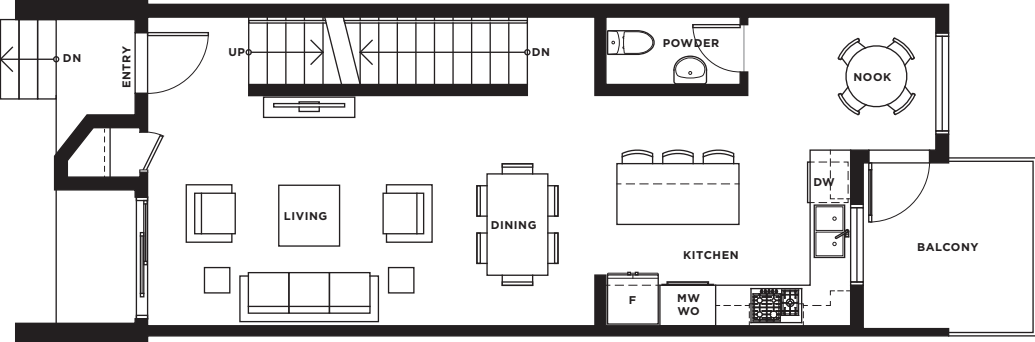
Third Level



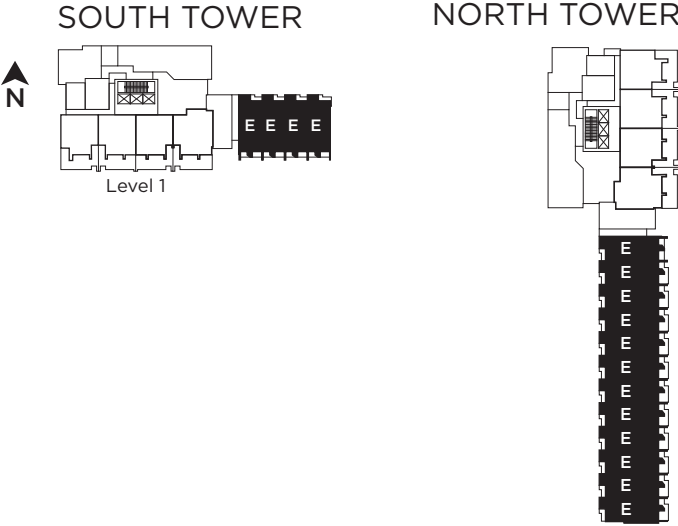
Fourth Level



First Level



Second Level



Level 1